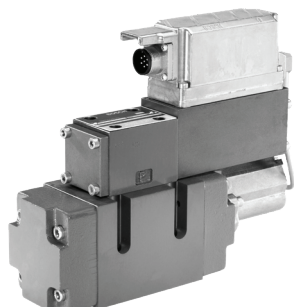


Bosch Rexroth Valve Exchange Program

USNR in conjunction with Bosch Rexroth provide a solution for obsolete and long lead-time valves. We offer a highly flexible replacement/upgrade path to the more efficient series-4X valve, giving you options that minimize the impact on your operation.

Solid Wood Products
Sawmill Systems
Dry Kilns
Planermill Systems
Scanning & Optimization
Machine Controls

Customer Support
Service
Training
Parts
Upgrades



Bosch Rexroth 4WRLE-3X valve is discontinued.



Bosch Rexroth's new 4WRLE-4X valve replaces the series-3X valve.

New, Remanufactured, or Rebuilt? Yes!

The program provides flexible options for sourcing series-2X, -3X, and -4X valves to keep your mill running smoothly while you plan an overall transition to the series-4X valve platform. Options for new, remanufactured, and repair/exchanges allow you to avoid downtime during this industry-wide transition.

Flexible Program to Avoid Downtime

Bosch Rexroth's new 4WRLE-4X series valve replaces many obsolete and long leadtime valves, including the series-2X and -3X valves that are used on a wide variety of your equipment.

USNR in conjunction with Bosch Rexroth, has developed a program to service and repair your obsolete valves as a continuity measure to keep your mill running smoothly while you plan for a controlled migration to the series-4X valve platform.

Note: Upgrading the 4WRLE-3X series valve to a series-4X requires scheduling a service call for valve tuning at installation. Series-3X valve core return credit honored for a limited time.

Valve Service Options

- Purchase a lower-priced remanufactured valve and get a full 2-year warranty (from date of shipping). Requires a valve core return, core credit applied.
- Return series-2X, -3X, and -4X valves for rebuild. The 3-week standard turn around time drops to 2 weeks when shipped priority.
- Purchase new in-stock valves and receive a core credit with the return of a replacement valve core.

Bosch Rexroth Valve Exchange and Upgrade Program

Valve Exchange Program Advantages

- **2-year OEM warranty on all remanufactured and repaired valves**
- USNR will stock popular sizes of remanufactured valves
- Quick turn around times for valve repairs
- USNR will arrange to have valves for repair and core credit picked up at mill sites and shipped directly to the Bosch Rexroth facilities in Bethlehem, PA

Upgrading to Series-4X Valves

The 4WRLE-4X valve is a higher-flow valve that is more robust, with a new onboard electronics OBE that improves performance and reliability.

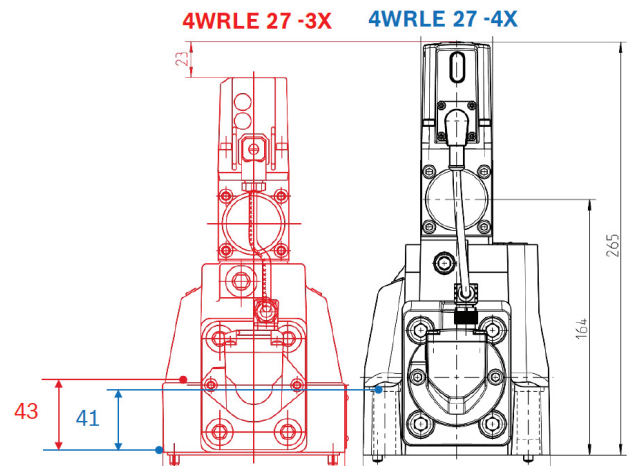
The unit requires initial tuning at installation to adjust for axis performance differences. Upgrading to the series-4X valve is estimated to take one day, with one USNR service technician working with a mill electrician (depending on how many valves are installed in one site visit).

The series-4X pilot operated, proportional directional valves are high-response control valves with spool position feedback. It also has an increased temperature range, and is even more robust to mechanical shock and vibration.

The optimized spool and housing allow higher nominal flow ratings in all sizes. The improved dynamic response is well suited for a wide range of demanding closed loop applications, involving pressure, force, position, and velocity control.

- Sizes 10, 16, 25, 27, 35
- Component series 4X
- Maximum operating pressure 350 bar
- Rated flow 60 ... 1500 L/min

Contact us for more information. OEM upgrades from USNR keep your operation running efficiently for years to come.



Series-4X valves have the same subplate interface and electrical connector as the series-3X. Sizes 10 and 16 require longer mounting screws which are supplied with the upgrade.